

(0.194)

SSW-115-02-G-T  
8

92314A194  
4

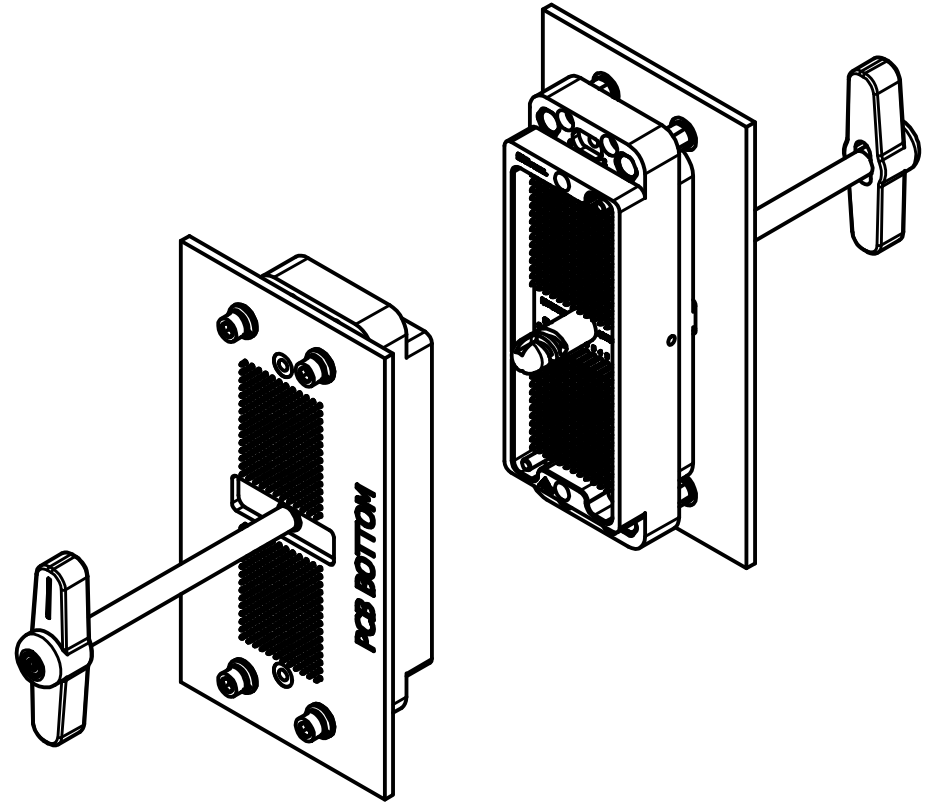
91115A190  
4

M5610-258-31  
4

92141A009  
4

832F45  
4

MS35338-137  
4



### APPLICATION REFERENCE

7	4	91115A190	HEX STANDOFF, F-F, 8-32, 5/16" L, .1/4" HEX
6	4	92141A009	#8 FLAT WASHER, STAINLESS
5	4	92314A194	SCREW, 8-32, .5L, HEX HEAD, SS 18-8
4	4	MS35338-137	#8 SPLIT WASHER, LOCK, STAINLESS
3	4	832F45	8-32 X 0.375 SKT CAP SST
2	4	M5610-258-31	WASHER, NYLON, WHITE, .170 I.D. X .283 O.D. X .031 THK
1	8	SSW-115-02-G-T	SOCKET STRIP HEADER, THT, 15X3 POS, .584L TAIL
ITEM	QTY	PART NUMBER	DESCRIPTION

### PARTS LIST

### COMMENTS / NOTES

1. SUPPORTS PCB THICKNESS UP TO .135".

MAC-PANEL

WWW.MACPANEL.COM

DRAWN BY  
JWALKER

DATE  
6/15/2021



Third Angle  
Projection

### DESCRIPTION

Header Kit, APEX 360 PCB, Socket

### DRAWING NO.

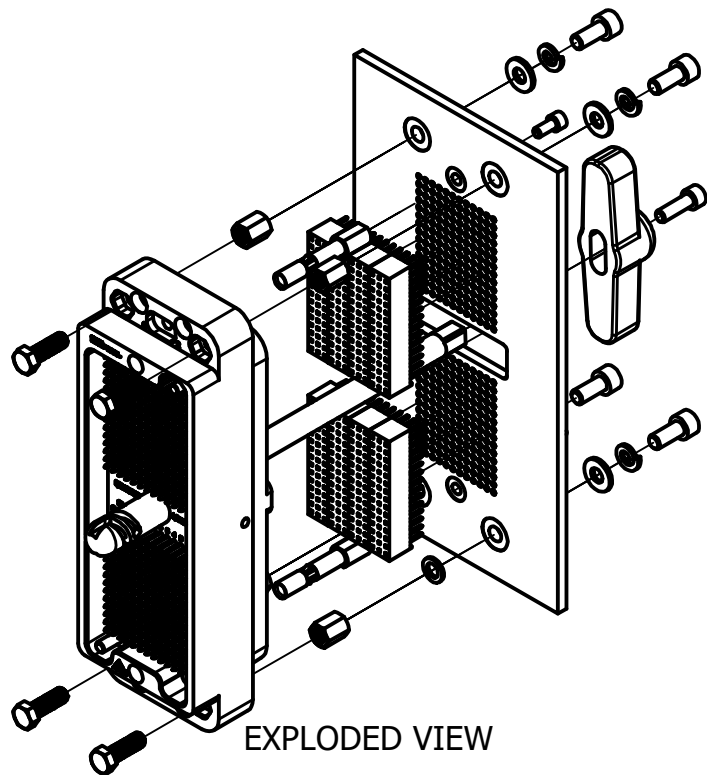
565864-CU

### REVISION

NR

SHEET

1 OF 3



A	4	DIA .187 - .177 NON-PLATED THRU DIA .375 - .385 PLATED ANNULAR RING (BOTH SIDES) PLACE CONNECTING VIAS DIA 0.015 (8X) EVEN SPACING BETWEEN TOP/BOTTOM ANNULAR RINGS
B	2	DIA .129 - .139 NON-PLATED THRU DIA .275 - .265 PLATED ANNULAR RING (BOTH SIDES) PLACE CONNECTING VIAS DIA 0.015 (8X) EVEN SPACING BETWEEN TOP/BOTTOM ANNULAR RINGS
C	360	DIA .036 - .046 PLATED THRU DIA .065 - .055 PLATED ANNULAR RING (BOTH SIDES)
HOLE	QUANTITY	DESCRIPTION
Hole Table		

115.01 mm (2X)  
[4,528 in]

100.33 mm  
[3,950 in]

35.56 mm TYP  
[1,400 in]

17.27 mm  
[0,680 in]

2.54 mm PITCH  
[0,100 in]

29.01 mm (2X)  
[1,142 in]

2.54 mm PITCH  
[0,100 in]

27.94 mm TYP  
[1,100 in]

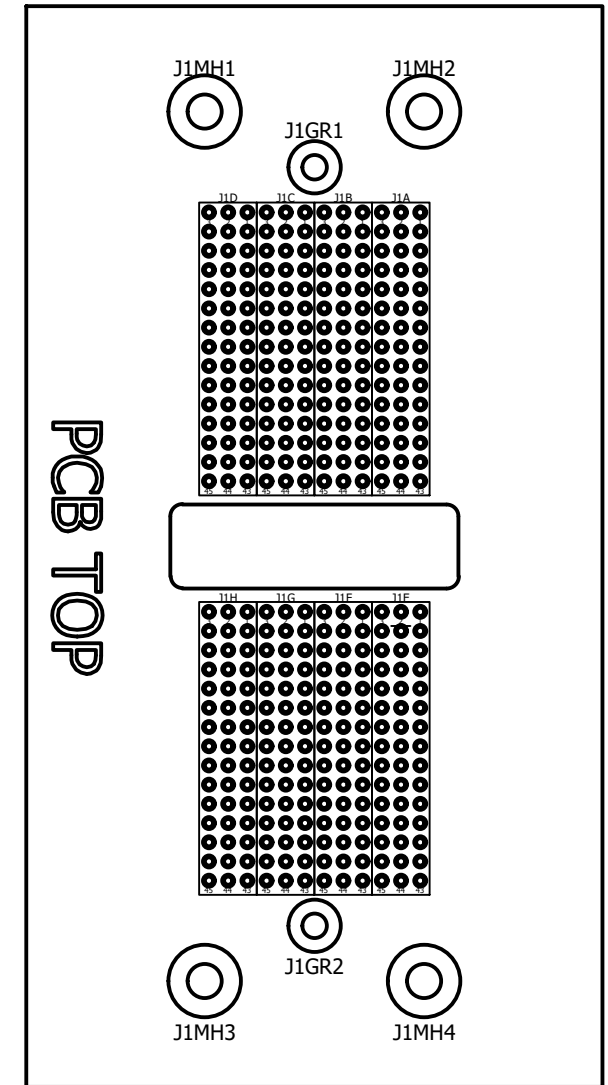
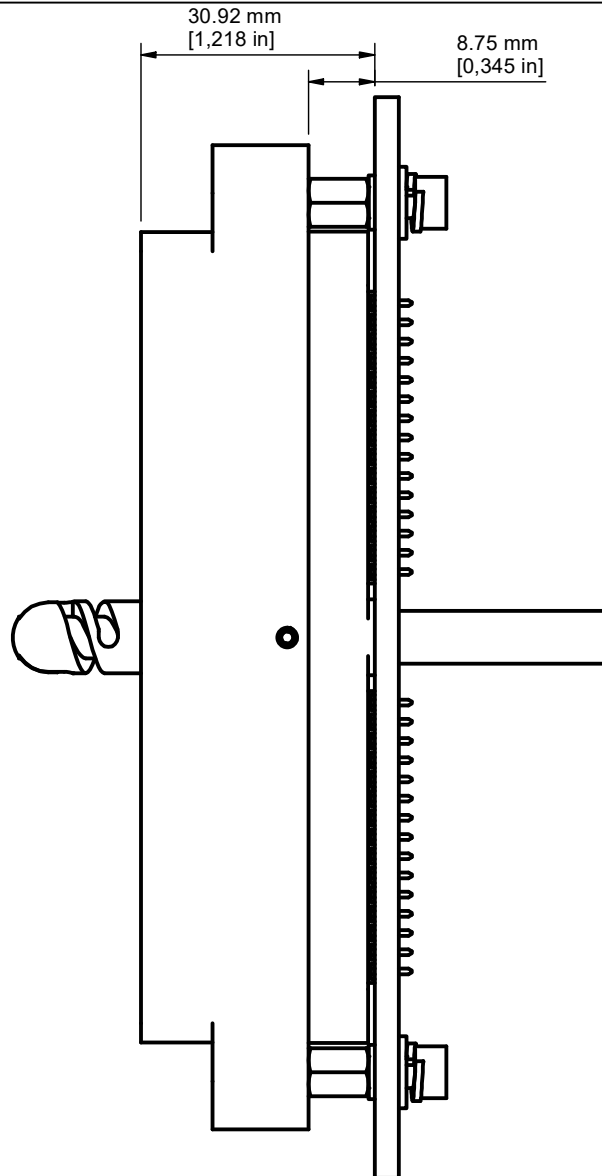
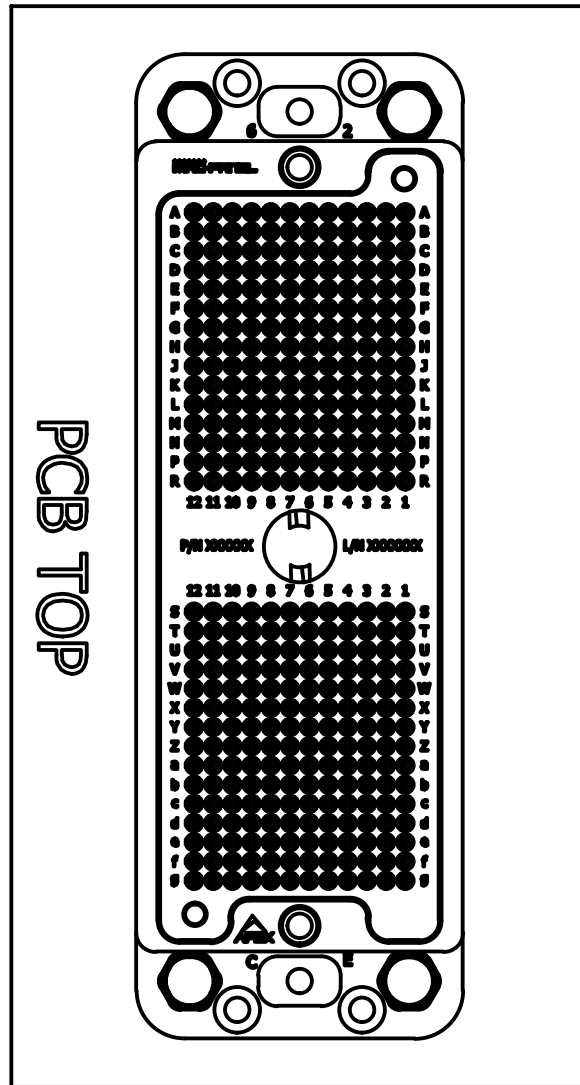
11.11 mm  
[0,438 in]

38.10 mm  
[1,500 in]

PCB TOP

PCB FOOTPRINT

COMMENTS / NOTES	DIMENSIONS ARE LOCATED CENTRALLY ABOUT ORIGIN	<div>000000 MAC-PANEL</div>	DRAWN BY JWALKER		DATE 6/15/2021	DESCRIPTION Header Kit, APEX 360 PCB, Socket	
			<div><div></div><div></div></div> Third Angle Projection		DRAWING NO.		
			SHEET 2 OF 3		565864-CU		REVISION NR
			WWW.MACPANEL.COM				



## APEX AND HEADER KIT INSTALLED

## PCB TOP

### COMMENTS / NOTES

REFER TO EXCEL SPREADSHEET "565864-CU.XLSX" TO DETERMINE PIN MAPPING AND REFERENCE DESIGNATOR MAPPING BETWEEN PCB ASSEMBLY AND HIGHER LEVEL ASSEMBLY.

MAC-PANEL

WWW.MACPANEL.COM

DRAWN BY  
JWALKER

DATE  
6/15/2021



Third Angle  
Projection

### DESCRIPTION

Header Kit, APEX 360 PCB, Socket

DRAWING NO.

565864-CU

REVISION

NR

SHEET  
3 OF 3