

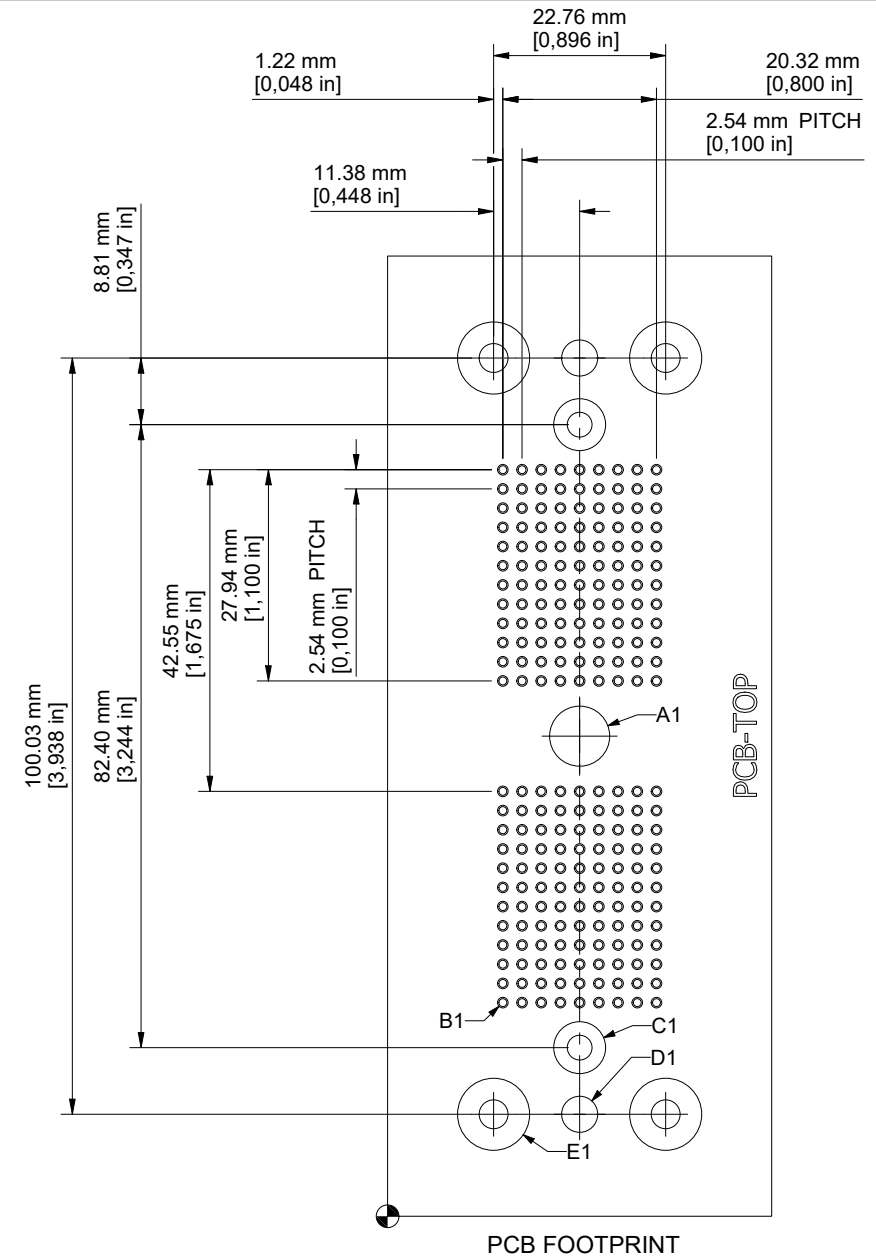
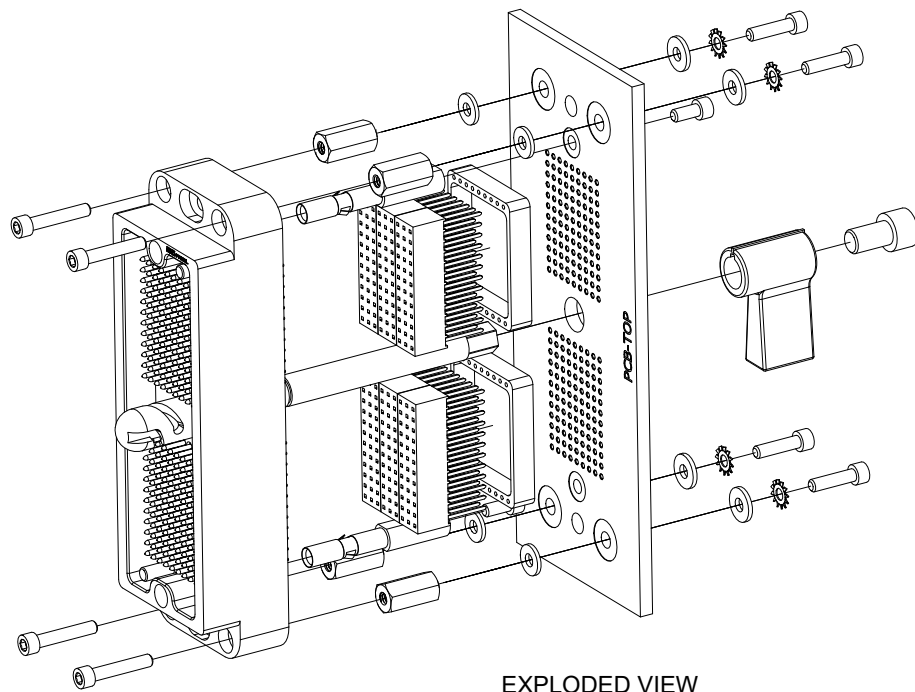
8	4	440SL5	WASHER, #4, SS, EXTERNAL STAR LOCK
7	4	440G45	SCR 4-40 X 3/8 SOC CAP
6	4	92141A005	WASHER, #4, SS, .125 ID, .312 OD
5	4	90295A060	WASHER, #4, NYLON, .12 ID, .28 OD
4	4	91115A164	4-40 F-F STANDOFF, .25HEX, .5L
3	4	440K45	4-40 X 5/8 SCHD SCREW
2	2	5520038	PCB SPACER, APEX 96 PLUG, FOR .500" STANDOFF
1	6	SSW-112-03-G-T	.100" PITCH SKT HEADER, 12 ROW x 3 COLUMN, .394 PC TAIL
ITEM	QTY	PART NUMBER	DESCRIPTION

Parts List

COMMENTS / NOTES		DRAWN BY JWALKER	DATE 3/29/2021	DESCRIPTION Header Kit,APEX 216 PCB, Plug,.500" STANDOFF	
				DRAWING NO.	REVISION
		SHEET 1 OF 3		565814-CU	NR

1. SUPPORTS PCB THICKNESS UP TO .125".
(USE SSW-112-04-G-T FOR THICKNESSES UP TO .300".)

WWW.MACPANEL.COM



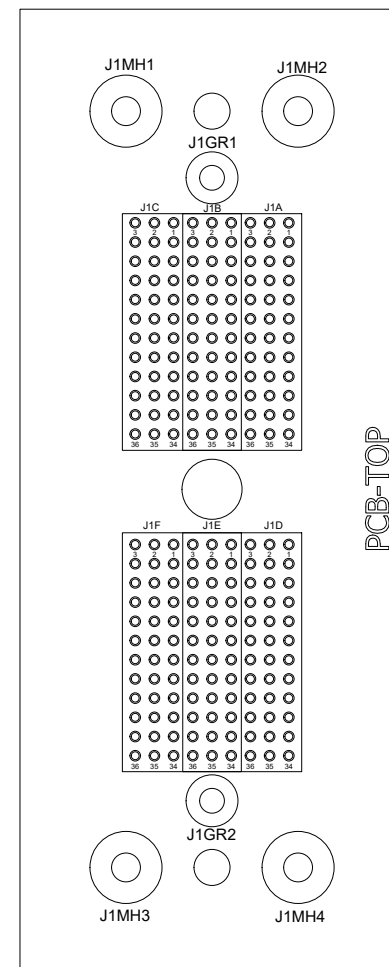
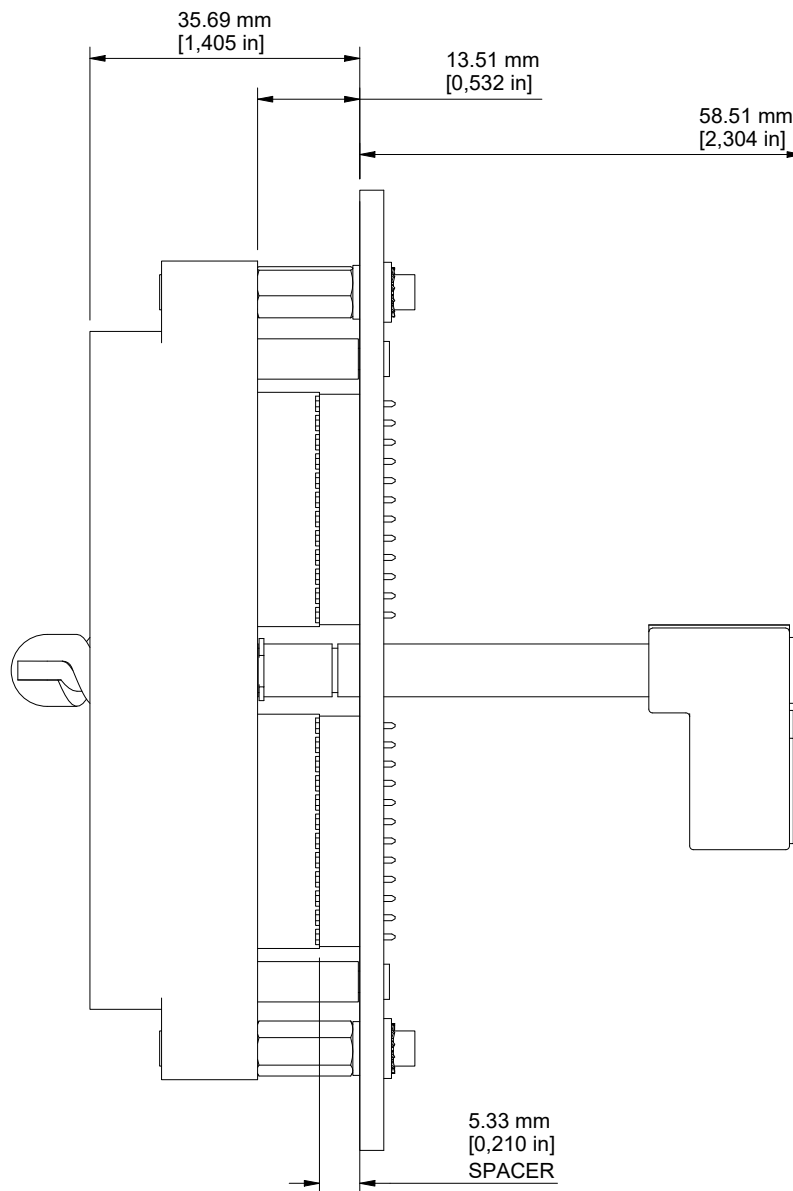
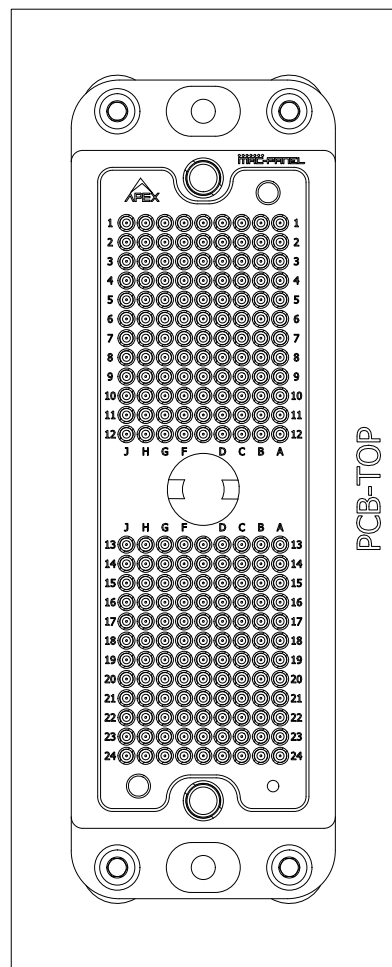
HOLE	QUANTITY	DESCRIPTION
E1	4	$\varnothing 0.150 - 0.160$ in NON-PLATED THRU $\varnothing 0.375 - 0.385$ in PLATED ANNULAR RING (BOTH SIDES) PLACE CONNECTING VIAS $\varnothing 0.015$ (8X) EVEN SPACING BETWEEN TOP/BOTTOM ANNULAR RINGS
D1	2	$\varnothing 0.188$ in NON PLATED THRU
C1	2	$\varnothing 0.129 - 0.139$ in NON-PLATED THRU $\varnothing 0.270 - 0.280$ in PLATED ANNULAR RING (BOTH SIDES) PLACE CONNECTING VIAS $\varnothing 0.015$ (8X) EVEN SPACING BETWEEN TOP/BOTTOM ANNULAR RINGS
B1	216	$\varnothing 0.036 - 0.046$ in PLATED THRU $\varnothing 0.055 - 0.065$ in PLATED ANNULAR RING (BOTH SIDES)
A1	1	$\varnothing 0.313$ in NON-PLATED THRU

COMMENTS / NOTES	
1. HOLE C1 IS OPTIONAL AND ONLY REQUIRED WHEN USING GROUND LUG (562893) CONNECTIONS. 2. HOLE D1 IS AN OPTIONAL TOOL CLEARANCE HOLE TO ACCESS SCREW FOR POLARIZATION KEYS (561164).	

	DRAWN BY JWALKER	DATE 3/29/2021	DESCRIPTION Header Kit,APEX 216 PCB, Plug,.500" STANDOFF	
	Third Angle Projection		DRAWING NO. 565814-CU	REVISION NR

WWW.MACPANEL.COM

SHEET
2 OF 3



APEX AND HEADER KIT INSTALLED

PCB - TOP

<p>COMMENTS / NOTES</p> <p>REFER TO EXCEL SPREADSHEET "565814-CU.XLSX" TO DETERMINE PIN MAPPING AND REFERENCE DESIGNATOR MAPPING BETWEEN PCB ASSEMBLY AND HIGHER LEVEL ASSEMBLY</p>	<p>MAC-PANEL</p> <p>WWW.MACPANEL.COM</p>	<p>DRAWN BY JWALKER</p> <p>DATE 3/29/2021</p> <p>Third Angle Projection</p> <p>SHEET 3 OF 3</p>	<p>DESCRIPTION</p> <p>Header Kit,APEX 216 PCB, Plug,.500" STANDOFF</p> <p>DRAWING NO. 565814-CU</p> <p>REVISION NR</p>
-------------------------------------------------------------------------------------------------------------------------------------------------------------------------------------	------------------------------------------	-----------------------------------------------------------------------------------------------------------------	------------------------------------------------------------------------------------------------------------------------------------