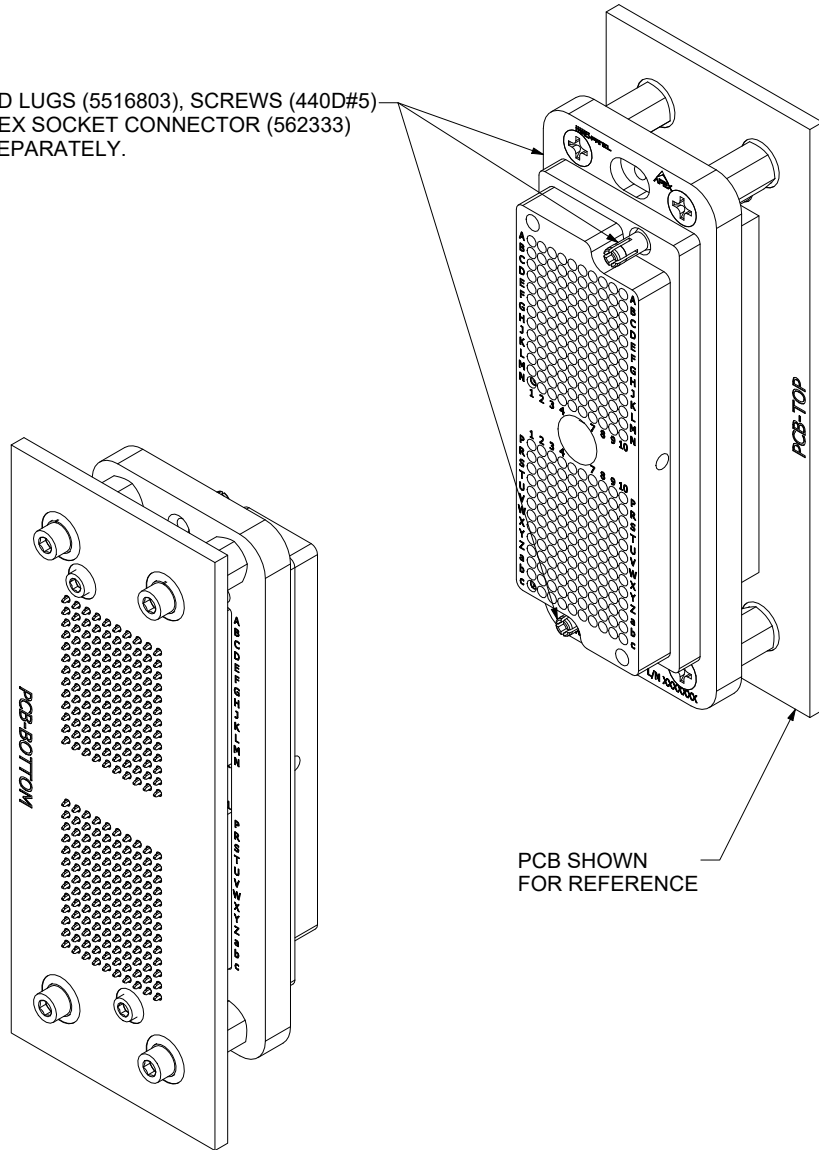
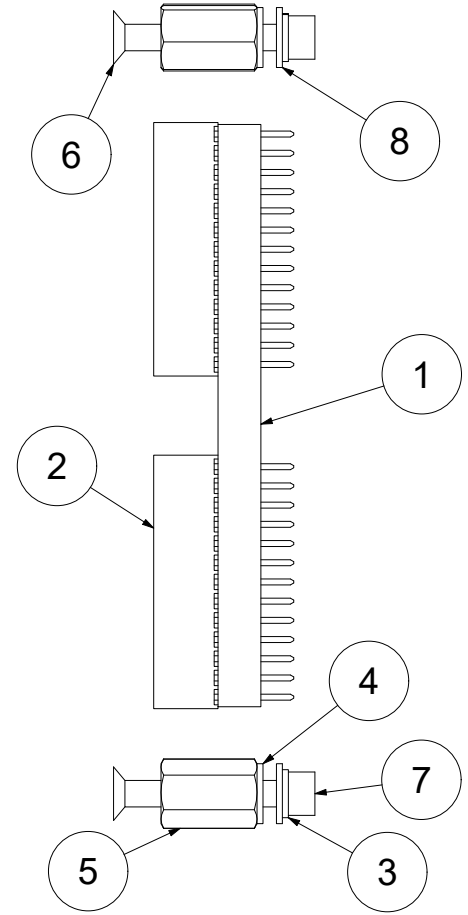
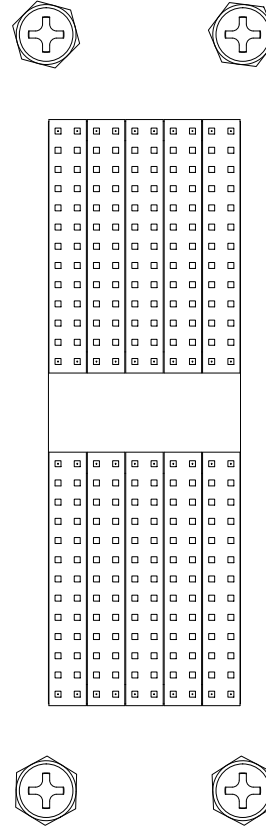


GROUND LUGS (5516803), SCREWS (440D#5) AND APEX SOCKET CONNECTOR (562333) SOLD SEPARATELY.



PCB SHOWN FOR REFERENCE



8	4	92141A008	18-8 SS WASHER, #6, .156"ID, .312"OD
7	4	632G45	SCR SOC CAP 6-32 X 7/16 SS
6	4	632H115	6-32 X 1/2 PHIL FHMS,100 DEG
5	4	91115A243	SS FEMALE THREADED HEX STANDOFF, 5/16 HEX, 1/2" L, 6-32
4	4	90295A380	NYLON PLASTIC WASHER, #6, .156"ID, .312"OD
3	4	MS35338-41	WASHER,LOCK-SPRING,6-32,HELI
2	10	SSW-113-03-G-D	.100" PITCH SKT HEADER, 13 ROW X 2 COLUMN, .394 PC TAIL
1	1	5519639	PCB SPACER, APEX 260, FOR .500" STANDOFF
ITEM	QTY	PART NUMBER	DESCRIPTION

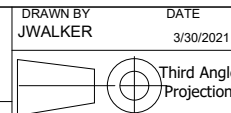
Parts List

COMMENTS / NOTES

1. SUPPORTS PCB THICKNESS UP TO .125".  
(USE SSW-113-04-G-D AND 632H45 FOR THICKNESS .125" TO .300".)

MAC-PANEL

WWW.MACPANEL.COM

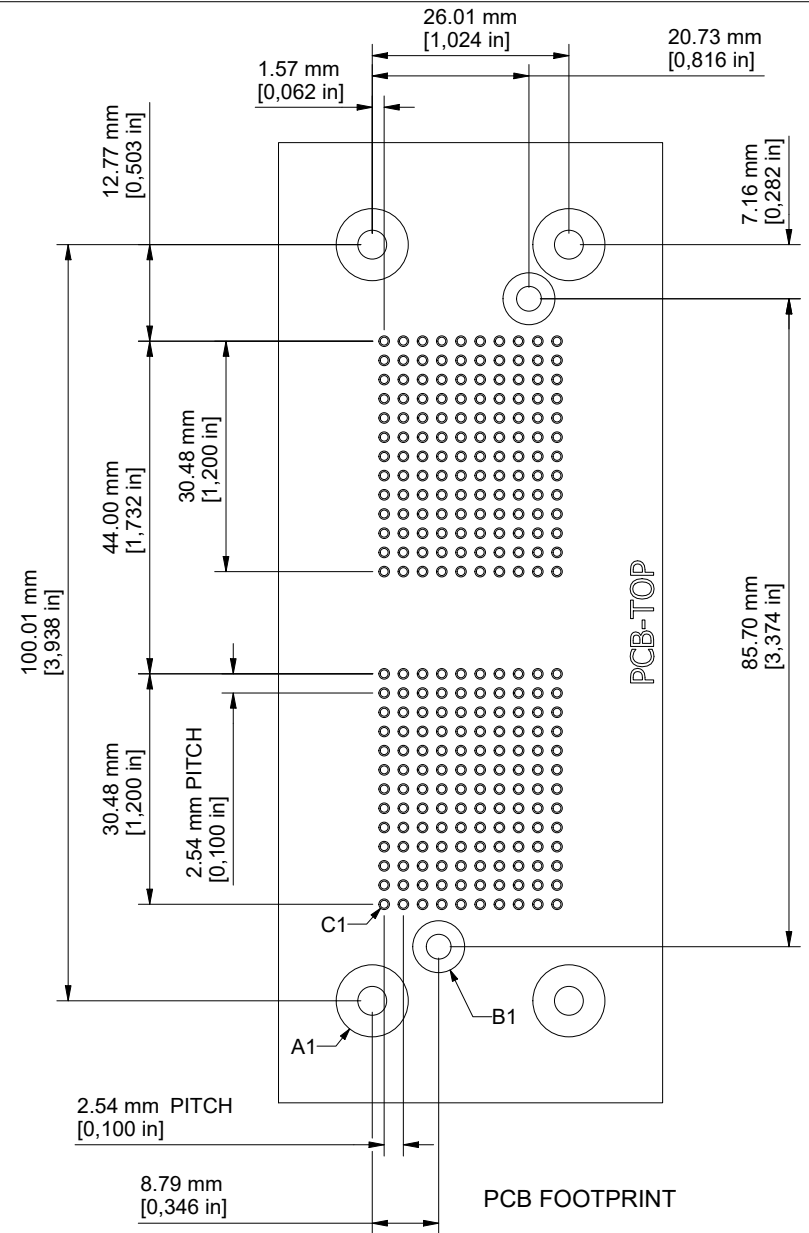
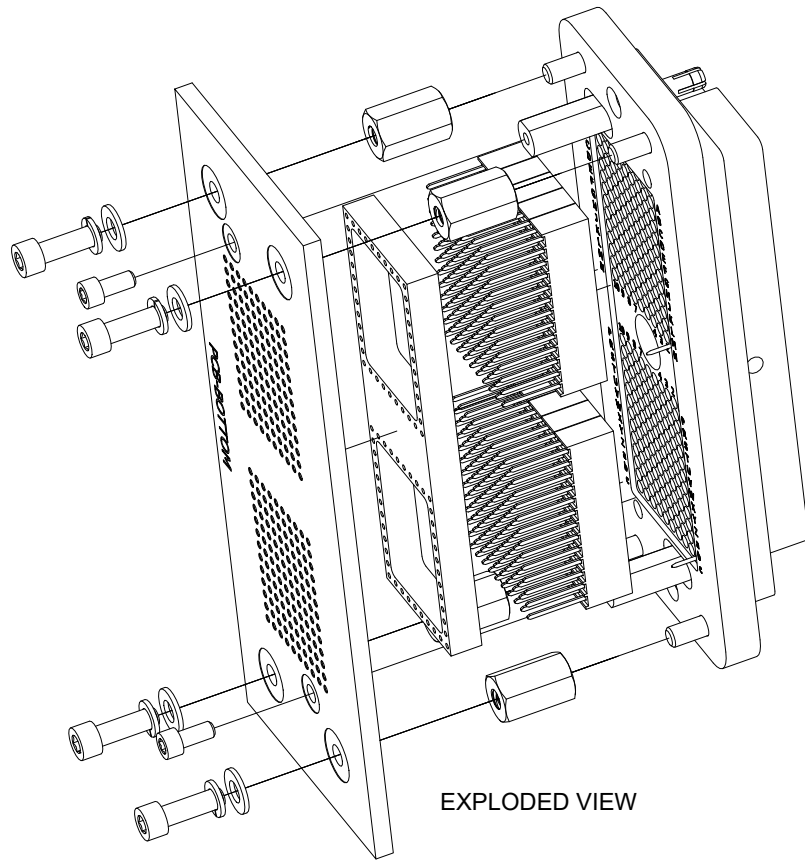


SHEET 1 OF 3

DESCRIPTION  
Header Kit,APEX 260 PCB,Socket,  
.500" STANDOFF

DRAWING NO.  
565809-CU

REVISION  
NR

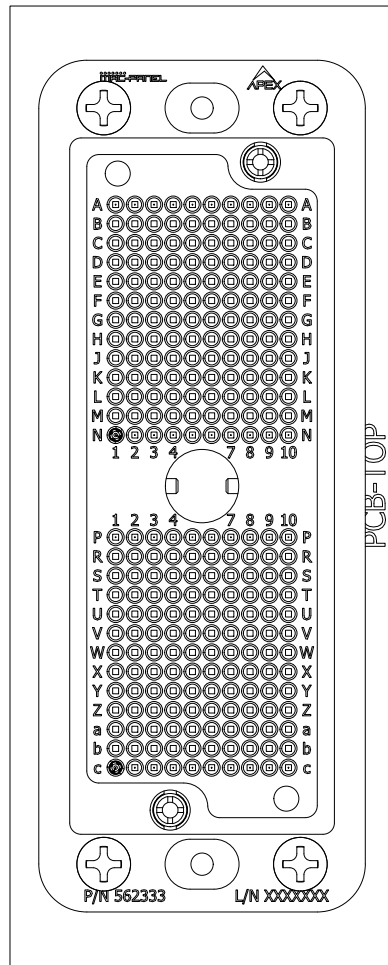


HOLE	QUANTITY	DESCRIPTION
A1	4	Ø0.150 - 0.160 in NON-PLATED THRU Ø0.375 - 0.385 in PLATED ANNULAR RING (BOTH SIDES) PLACE CONNECTING VIAS Ø0.015 (8X) EVEN SPACING BETWEEN TOP/BOTTOM ANNULAR RINGS
B1	2	Ø0.129 - 0.139 in NON-PLATED THRU Ø0.270 - 0.280 in PLATED ANNULAR RING (BOTH SIDES) PLACE CONNECTING VIAS Ø0.015 (8X) EVEN SPACING BETWEEN TOP/BOTTOM ANNULAR RINGS
C1	260	Ø0.036 - 0.046 in PLATED THRU Ø0.055 - 0.065 in PLATED ANNULAR RING (BOTH SIDES)
HOLE	QUANTITY	DESCRIPTION

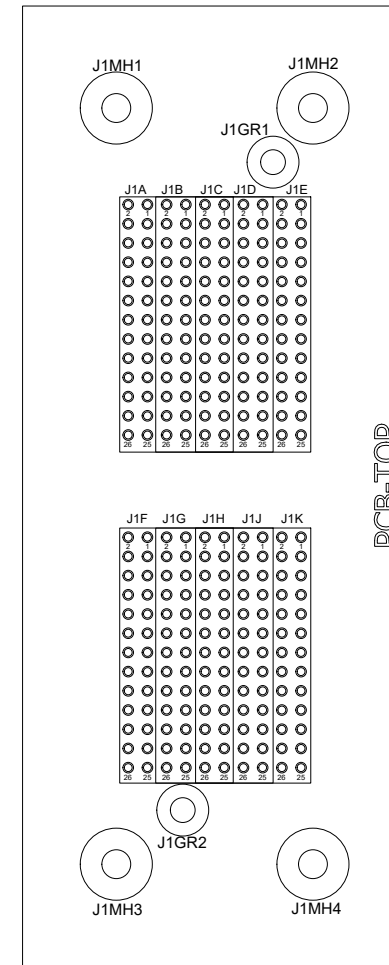
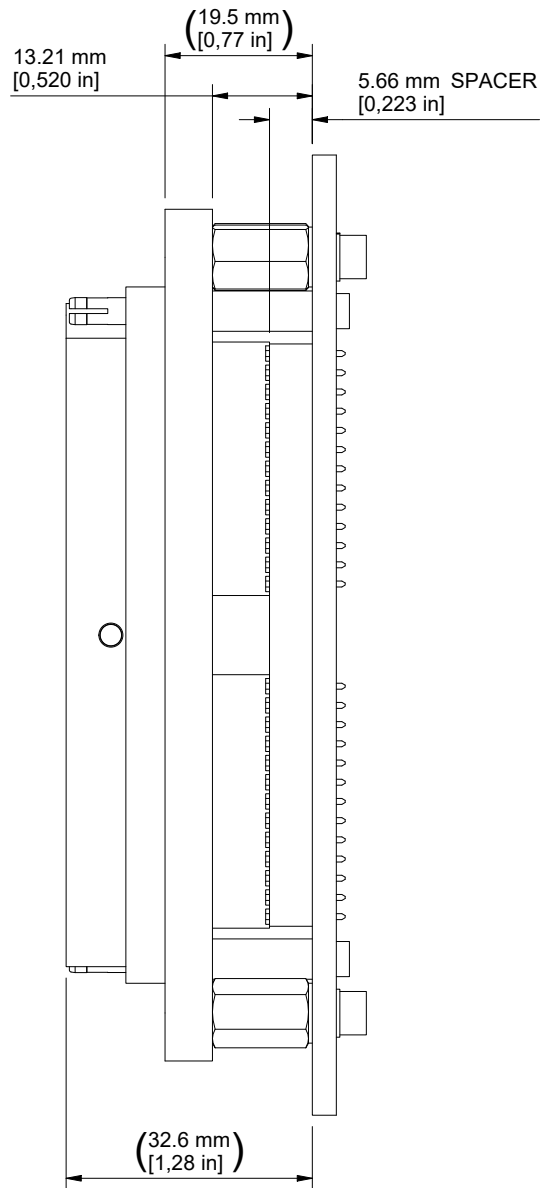
Hole Table

COMMENTS / NOTES
------------------

	DRAWN BY JWALKER	DATE 3/30/2021	DESCRIPTION <b>Header Kit, APEX 260 PCB, Socket, .500" STANDOFF</b>
		WWW.MACPANEL.COM	DRAWING NO. 565809-CU
SHEET 2 OF 3	REVISION NR		



APEX AND HEADER KIT INSTALLED



PCB TOP

COMMENTS / NOTES

REFER TO EXCEL SPREADSHEET "565809-CU.XLSX" TO DETERMINE PIN MAPPING AND REFERENCE DESIGNATOR MAPPING BETWEEN PCB ASSEMBLY AND HIGHER LEVEL ASSEMBLY



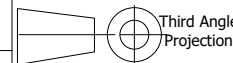
WWW.MACPANEL.COM

DRAWN BY  
JWALKER

DATE  
3/30/2021

DESCRIPTION

Header Kit, APEX 260 PCB, Socket, .500" STANDOFF



SHEET  
3 OF 3

DRAWING NO.

565809-CU

REVISION

NR