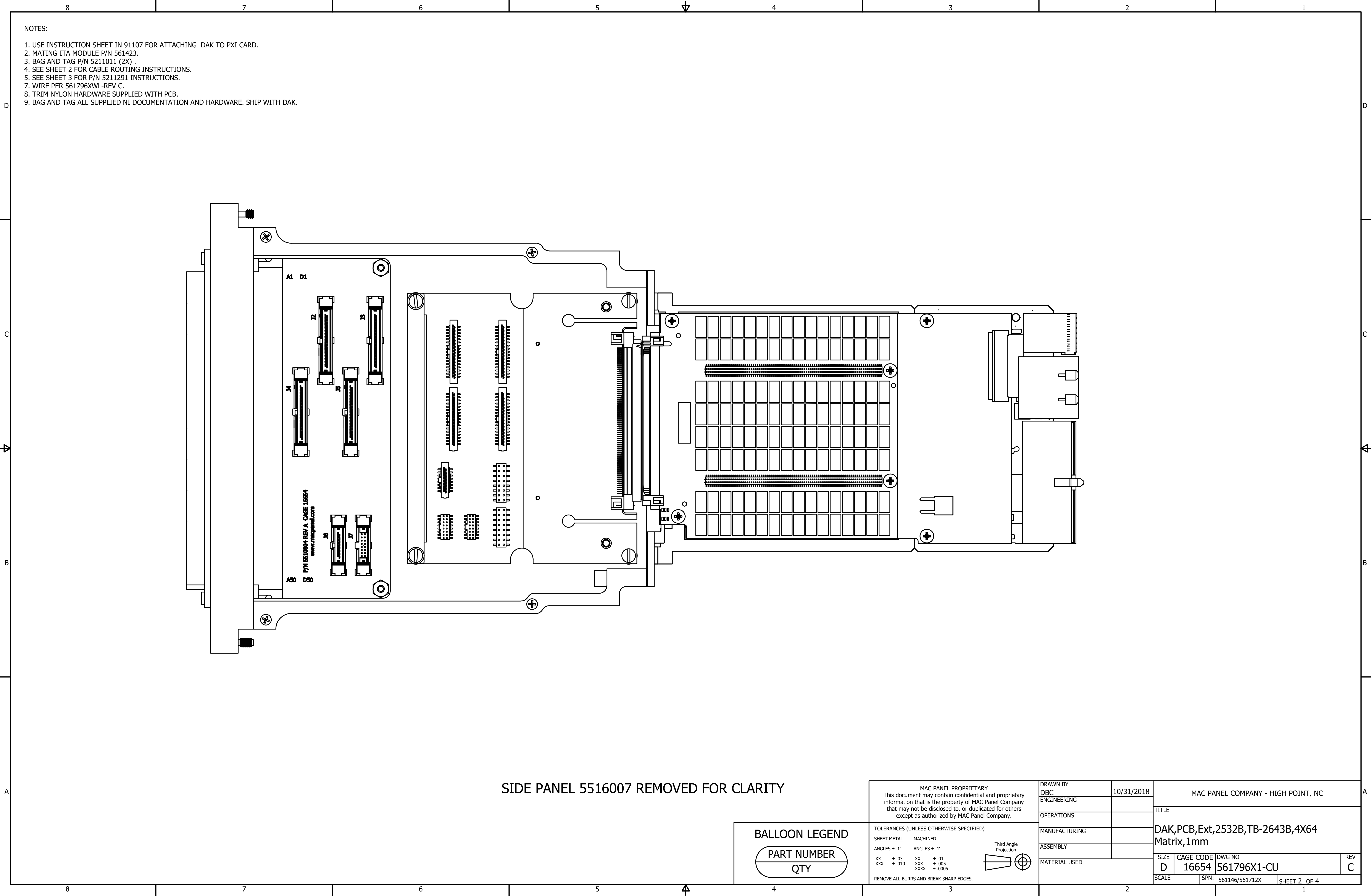


- NOTES:
1. USE INSTRUCTION SHEET IN 91107 FOR ATTACHING DAK TO PXI CARD.
  2. MATING ITA MODULE P/N 561423.
  3. BAG AND TAG P/N 5211011 (2X) .
  4. SEE SHEET 2 FOR CABLE ROUTING INSTRUCTIONS.
  5. SEE SHEET 3 FOR P/N 5211291 INSTRUCTIONS.
  7. WIRE PER 561796XWL-REV C.
  8. TRIM NYLON HARDWARE SUPPLIED WITH PCB.
  9. BAG AND TAG ALL SUPPLIED NI DOCUMENTATION AND HARDWARE. SHIP WITH DAK.

BALLOON LEGEND	
PART NUMBER	QTY

MAC PANEL PROPRIETARY This document may contain confidential and proprietary information that is the property of MAC Panel Company that may not be disclosed to, or duplicated for others except as authorized by MAC Panel Company.		DRAWN BY DBC	10/31/2018	MAC PANEL COMPANY - HIGH POINT, NC	
TOLERANCES (UNLESS OTHERWISE SPECIFIED)		ENGINEERING		TITLE	
SHEET METAL MACHINED		OPERATIONS		DAK,PCB,Ext,2532B,TB-2643B,4X64	
ANGLES ± 1°		MANUFACTURING		Matrix,1mm	
.XX ± .03 .XXX ± .010		ASSEMBLY		SIZE CAGE CODE DWG NO	
.XX ± .01 .XXX ± .005 .XXXX ± .0005		MATERIAL USED		D 16654 561796X1-CU	
REMOVE ALL BURRS AND BREAK SHARP EDGES.		SCALE		SPN: 561146/561712X	REV C
				SHEET 1 OF 4	



- NOTES:
1. USE INSTRUCTION SHEET IN 91107 FOR ATTACHING DAK TO PXI CARD.
  2. MATING ITA MODULE P/N 561423.
  3. BAG AND TAG P/N 5211011 (2X) .
  4. SEE SHEET 2 FOR CABLE ROUTING INSTRUCTIONS.
  5. SEE SHEET 3 FOR P/N 5211291 INSTRUCTIONS.
  7. WIRE PER 561796XWL-REV C.
  8. TRIM NYLON HARDWARE SUPPLIED WITH PCB.
  9. BAG AND TAG ALL SUPPLIED NI DOCUMENTATION AND HARDWARE. SHIP WITH DAK.

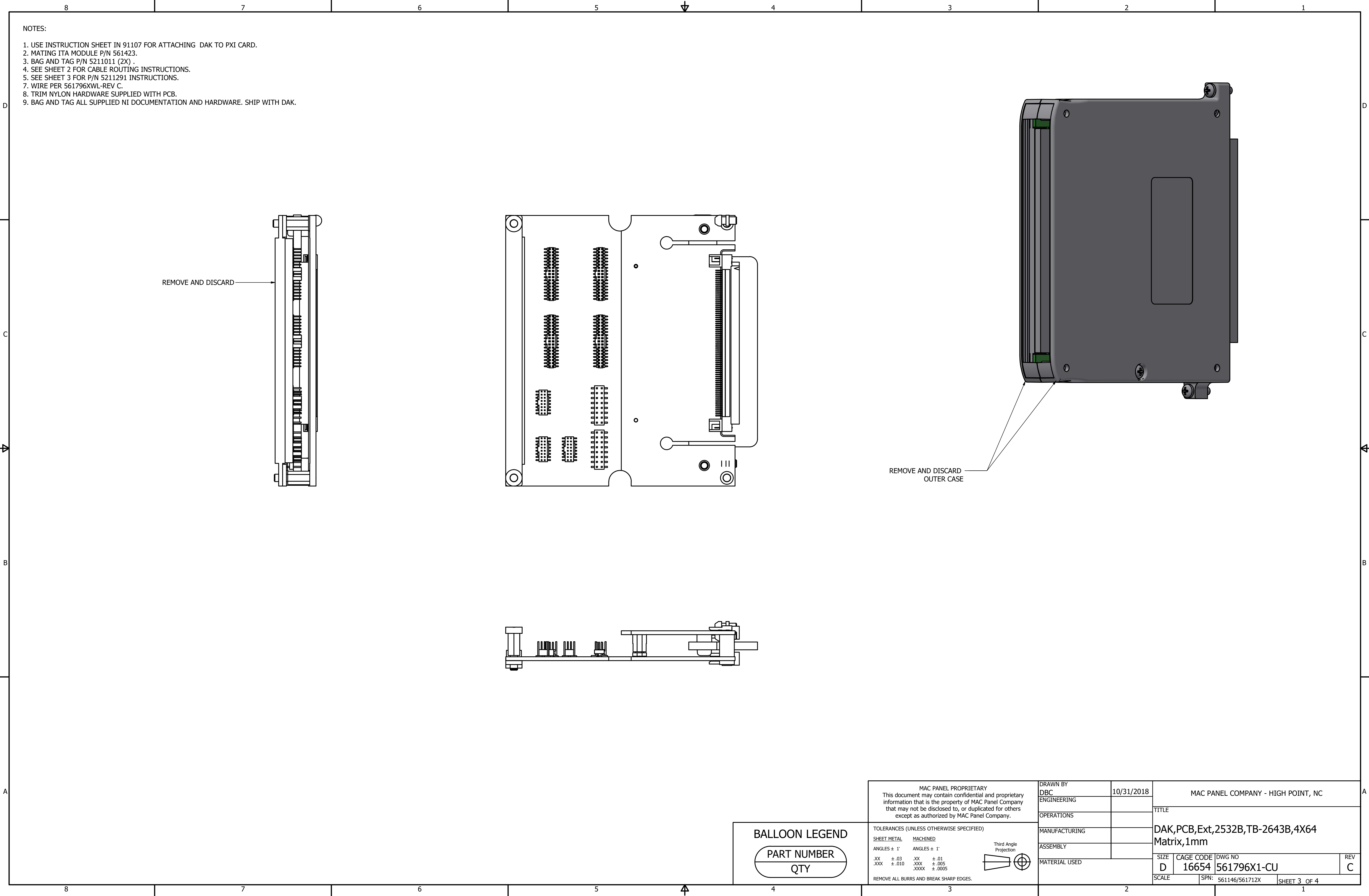
SIDE PANEL 5516007 REMOVED FOR CLARITY

BALLOON LEGEND

PART NUMBER

QTY

MAC PANEL PROPRIETARY This document may contain confidential and proprietary information that is the property of MAC Panel Company that may not be disclosed to, or duplicated for others except as authorized by MAC Panel Company.		DRAWN BY DBC	10/31/2018	MAC PANEL COMPANY - HIGH POINT, NC	
TOLERANCES (UNLESS OTHERWISE SPECIFIED)		ENGINEERING		TITLE	
SHEET METAL MACHINED		OPERATIONS		DAK,PCB,Ext,2532B,TB-2643B,4X64 Matrix,1mm	
ANGLES ± 1' ANGLES ± 1'		MANUFACTURING			
.XX ± .03 .XX ± .01 .XXX ± .010 .XXX ± .005 .XXXX ± .0005 .XXXX ± .0005		ASSEMBLY		SIZE CAGE CODE DWG NO	
REMOVE ALL BURRS AND BREAK SHARP EDGES.		MATERIAL USED		D 16654 561796X1-CU	
				SCALE	REV C
				SPN: 561146/561712X	
				SHEET 2 OF 4	



8

7

6

5

4

3

2

1

NOTES:

1. USE INSTRUCTION SHEET IN 91107 FOR ATTACHING DAK TO PXI CARD.

2. MATING ITA MODULE P/N 561423.

3. BAG AND TAG P/N 5211011 (2X) .

4. SEE SHEET 2 FOR CABLE ROUTING INSTRUCTIONS.

5. SEE SHEET 3 FOR P/N 5211291 INSTRUCTIONS.

7. WIRE PER 561796XWL-REV C.

8. TRIM NYLON HARDWARE SUPPLIED WITH PCB.

9. BAG AND TAG ALL SUPPLIED NI DOCUMENTATION AND HARDWARE. SHIP WITH DAK.

		J2 (NI, LOW. COL.)			J2 (NI, LOW. COL.)			J3 (NI, LOW. COL.)			J3 (NI, LOW. COL.)					
J1	J2		SIGNAL	J1	J2		SIGNAL	J1	J3		SIGNAL	J1	J3		SIGNAL	
A1	1	1	C16+	B1	2	2	C16-	C1	1	1	C0+	D1	2	2	C0-	
A2	3	3	C17+	B2	4	4	C17-	C2	3	3	C1+	D2	4	4	C1-	
A3	5	5	C18+	B3	6	6	C18-	C3	5	5	C2+	D3	6	6	C2-	
A4	7	7	C19+	B4	8	8	C19-	C4	7	7	C3+	D4	8	8	C3-	
A5	9	9	C20+	B5	10	10	C20-	C5	9	9	C4+	D5	10	10	C4-	
A6	11	11	C21+	B6	12	12	C21-	C6	11	11	C5+	D6	12	12	C5-	
A7	13	13	C22+	B7	14	14	C22-	C7	13	13	C6+	D7	14	14	C6-	
A8	15	15	C23+	B8	16	16	C23-	C8	15	15	C7+	D8	16	16	C7-	
A9	17	17	C24+	B9	18	18	C24-	C9	17	17	C8+	D9	18	18	C8-	
A10	19	19	C25+	B10	20	20	C25-	C10	19	19	C9+	D10	20	20	C9-	
A11	21	21	C26+	B11	22	22	C26-	C11	21	21	C10+	D11	22	22	C10-	
A12	23	23	C27+	B12	24	24	C27-	C12	23	23	C11+	D12	24	24	C11-	
A13	25	25	C28+	B13	26	26	C28-	C13	25	25	C12+	D13	26	26	C12-	
A14	27	27	C29+	B14	28	28	C29-	C14	27	27	C13+	D14	28	28	C13-	
A15	29	29	C30+	B15	30	30	C30-	C15	29	29	C14+	D15	30	30	C14-	
A16	31	31	C31+	B16	32	32	C31-	C16	31	31	C15+	D16	32	32	C15-	
A17	33	33	NC	B17	34	34	NC	C17	33	33	NC	D17	34	34	NC	
J1	J5	J13 (NI, UP. COL.)	SIGNAL	J1	J5	J13 (NI, UP. COL.)	SIGNAL	J1	J4	J12 (NI, UP. COL.)	SIGNAL	J1	J4	J12 (NI, UP. COL.)	SIGNAL	
C18	1	1	C63-	D18	2	2	C63+	A18	1	1	C47-	B18	2	2	C47+	
C19	3	3	C62-	D19	4	4	C62+	A19	3	3	C46-	B19	4	4	C46+	
C20	5	5	C61-	D20	6	6	C61+	A20	5	5	C45-	B20	6	6	C45+	
C21	7	7	C60-	D21	8	8	C60+	A21	7	7	C44-	B21	8	8	C44+	
C22	9	9	C59-	D22	10	10	C59+	A22	9	9	C43-	B22	10	10	C43+	
C23	11	11	C58-	D23	12	12	C58+	A23	11	11	C42-	B23	12	12	C42+	
C24	13	13	C57-	D24	14	14	C57+	A24	13	13	C41-	B24	14	14	C41+	
C25	15	15	C56-	D25	16	16	C56+	A25	15	15	C40-	B25	16	16	C40+	
C26	17	17	C55-	D26	18	18	C55+	A26	17	17	C39-	B26	18	18	C39+	
C27	19	19	C54-	D27	20	20	C54+	A27	19	19	C38-	B27	20	20	C38+	
C28	21	21	C53-	D28	22	22	C53+	A28	21	21	C37-	B28	22	22	C37+	
C29	23	23	C52-	D29	24	24	C52+	A29	23	23	C36-	B29	24	24	C36+	
C30	25	25	C51-	D30	26	26	C51+	A30	25	25	C35-	B30	26	26	C35+	
C31	27	27	C50-	D31	28	28	C50+	A31	27	27	C34-	B31	28	28	C34+	
C32	29	29	C49-	D32	30	30	C49+	A32	29	29	C33-	B32	30	30	C33+	
C33	31	31	C48-	D33	32	32	C48+	A33	31	31	C32-	B33	32	32	C32+	
C34	33	33	NC	D34	34	34	NC	A34	33	33	NC	B34	34	34	NC	
J1	J6	J4 (NI, ROW)	SIGNAL	J1	J6	J4 (NI, ROW)	SIGNAL									
A43	1	1	R0+	B43	2	2	R0-									
A44	3	3	R1+	B44	4	4	R1-									
A45	5	5	R2+	B45	6	6	R2-									
A46	7	7	R3+	B46	8	8	R3-									
A47	9			B47	10											
A48	11			B48	12											
A49	13			B49	14											
A50	15			B50	16											

BALLOON LEGEND

PART NUMBER

QTY

MAC PANEL PROPRIETARY

This document may contain confidential and proprietary information that is the property of MAC Panel Company that may not be disclosed to, or duplicated for others except as authorized by MAC Panel Company.

TOLERANCES (UNLESS OTHERWISE SPECIFIED)

SHEET METAL

MACHINED

ANGLES ± 1'

ANGLES ± 1'

.XX ± .03

.XX ± .01

.XXX ± .010

.XXX ± .005

.XXXX ± .0005

Third Angle Projection

REMOVE ALL BURRS AND BREAK SHARP EDGES.

DRAWN BY

DBC

ENGINEERING

OPERATIONS

MANUFACTURING

ASSEMBLY

MATERIAL USED

10/31/2018

MAC PANEL COMPANY - HIGH POINT, NC

TITLE

DAK,PCB,Ext,2532B,TB-2643B,4X64 Matrix,1mm

SIZE

D

CAGE CODE

16654

DWG NO

561796X1-CU

REV

C

SCALE

SPN:

561146/561712X

SHEET 4

OF 4

8

7

6

5

4

3

2

1

4

4

4

4

4

4

4

4