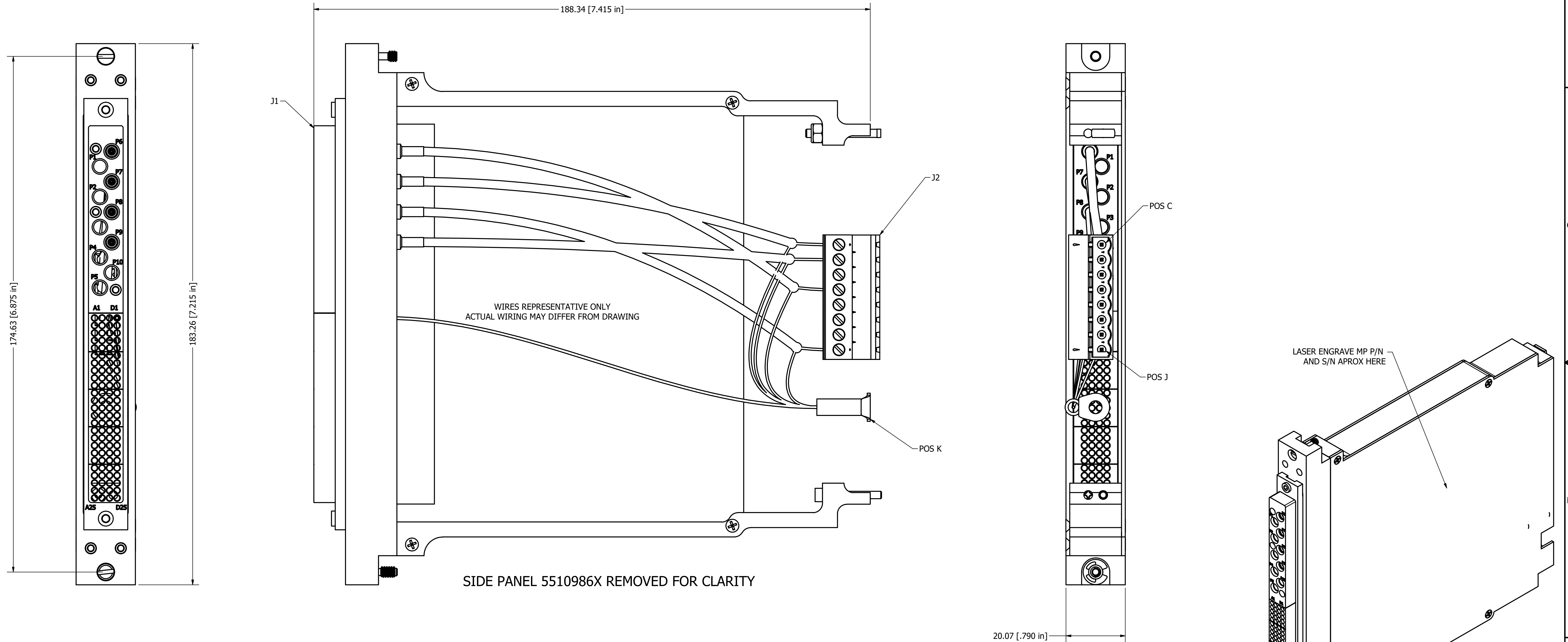


NOTES:

1. WIRE AND CHECK DAK PER WIRING TABLE BELOW.
2. ENSURE RG316 CABLE IS AS LONG AS POSSIBLE BEFORE RAYCHEM SPLICE. KEEP LEADS FROM RAYCHEM SPLICE FOR CENTER CONDUCTOR SIGNALS AT 1.3" MAX LENGTH TO TERMINATION.
3. TIE ALL SHIELDS FROM RG316 CABLE USING LAP AND WRAP SOLDER JOINTS TO WIRE TERMINATING AT POS K.
4. ENSURE CONNECTOR AND WIRE END CAN EXTEND PAS END OF DAK 1" MIN, 1.5" MAX.
5. BAG AND TAG P/NS 5510991 (1X), 5510941 (1X), 440E9230 (1X) AND SHIP WITH DAK.



WIRING TABLE	
TO (J1)	FROM (J2)
P6 CENTER	F (HI)
P6 SHIELD	K
P7 CENTER	C (LO)
P7 SHIELD	K
P8 CENTER	J (HI SENSE)
P8 SHIELD	K
P9 CENTER	D (LO SENSE)
P9 SHIELD	K
D1	K

BALLOON LEGEND
PART NUMBER
QTY

MAC PANEL PROPRIETARY This document may contain confidential and proprietary information that is the property of MAC Panel Company that may not be disclosed to, or duplicated for others except as authorized by MAC Panel Company.		DRAWN BY DBC	09/05/2019	MAC PANEL COMPANY - HIGH POINT, NC	
TOLERANCES (UNLESS OTHERWISE SPECIFIED)		ENGINEERING		TITLE	
SHEET METAL MACHINED		OPERATIONS		DAK,Cable, Ext,562179, 8 Pos Combicon, PXI-4139 Custom	
ANGLES ± 1°		MANUFACTURING		SIZE	CAGE CODE
.XX ± .03 .XX ± .01		ASSEMBLY		D	16654
.XXX ± .010 .XXX ± .005		MATERIAL USED		DWG NO	561286X1-CU
.XXXX ± .0005		AS SHOWN		REV	B
REMOVE ALL BURRS AND BREAK SHARP EDGES.				SCALE	SPN:
Third Angle Projection				SHEET 1 OF 1	