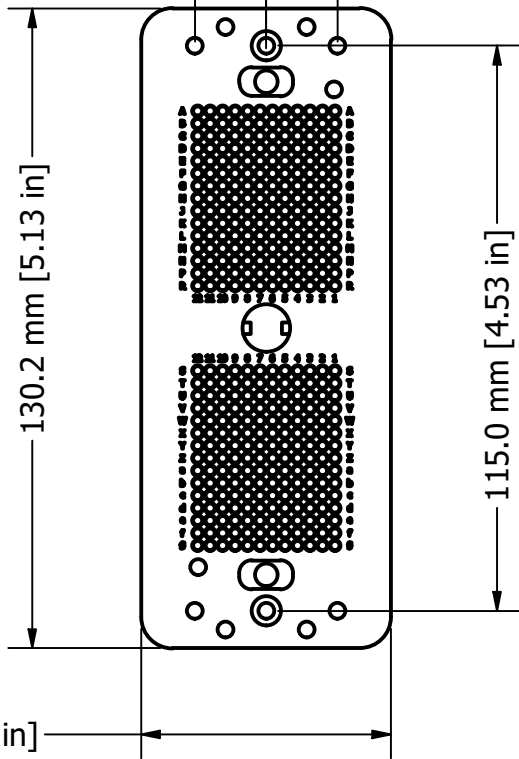


14.5 mm [.57 in]

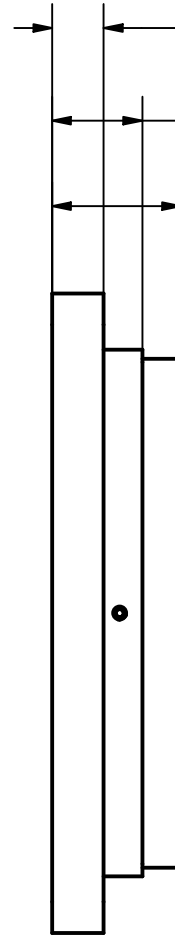
14.5 mm [.57 in]



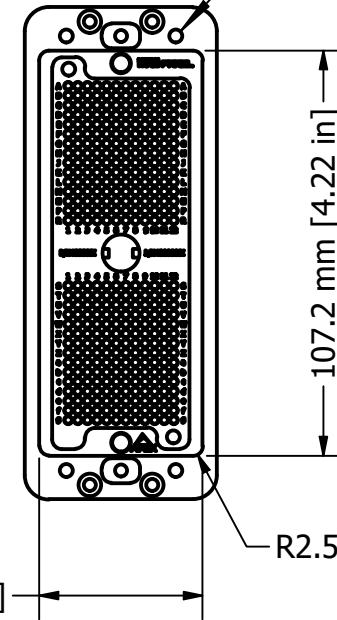
10.5 mm [.41 in]

18.3 mm [.72 in]

26.2 mm [1.03 in]



8-32 UNC - 2B



COMMENTS / NOTES

Overall View

MACPANEL

WWW.MACPANEL.COM

DRAWN BY
bsalvatini

DATE
1/27/2021



DESCRIPTION

APEX, Socket, 360 Position,
Crimp

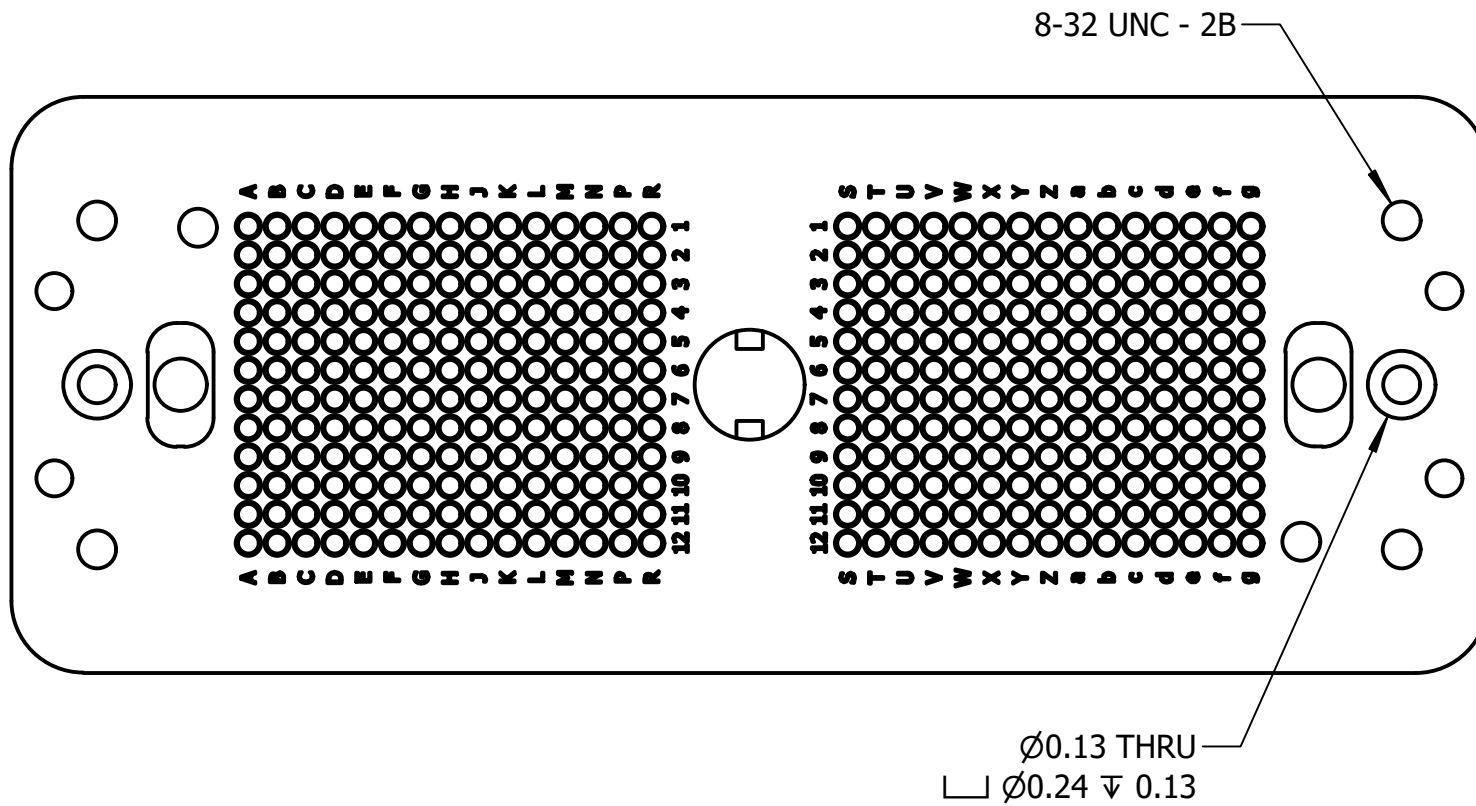
SHEET
1 OF 3

DRAWING NO.

561494-CUCU

REVISION

A



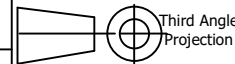
COMMENTS / NOTES
View of Back or Wiring Side

MACPANEL

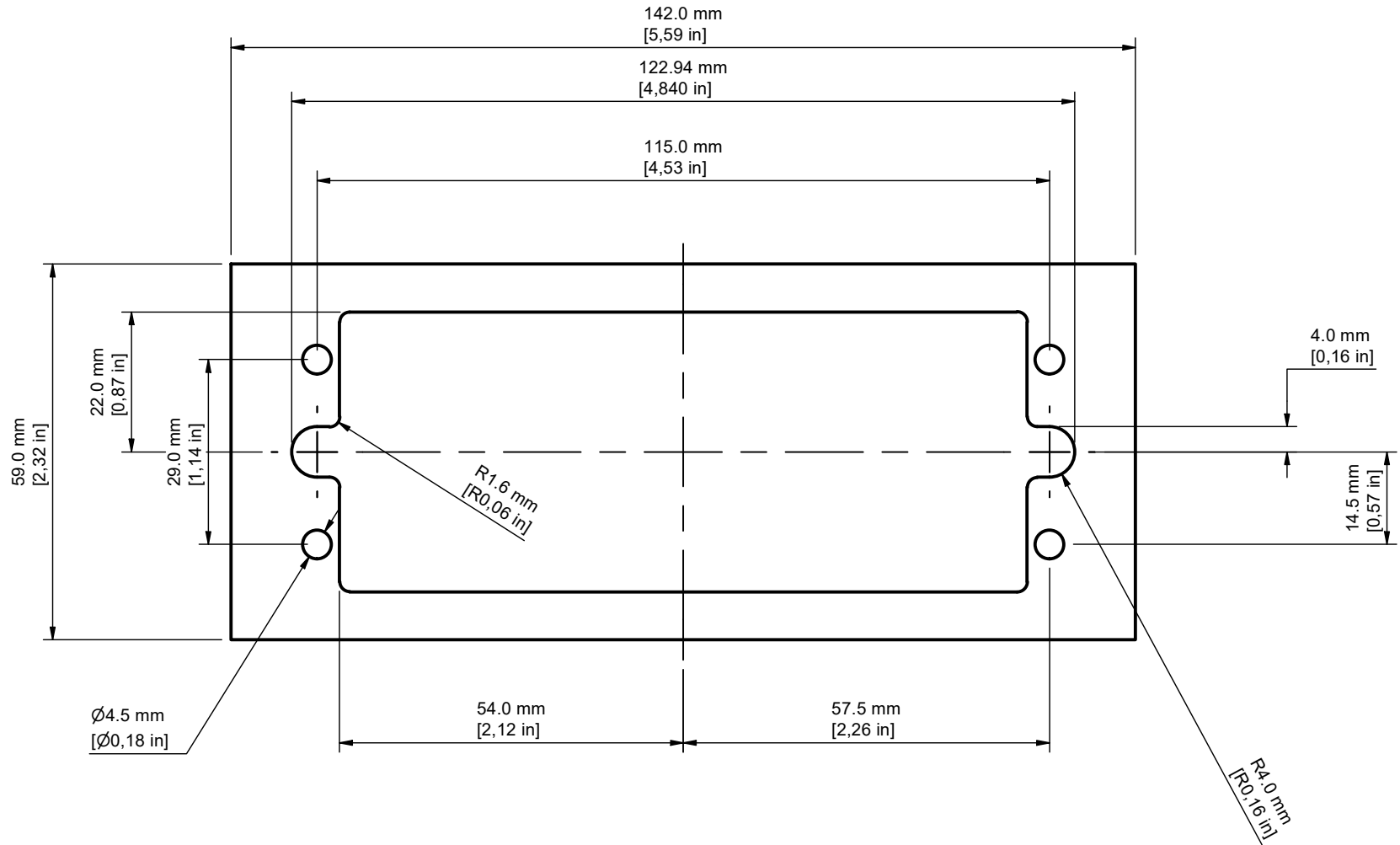
WWW.MACPANEL.COM

DRAWN BY
bsalvatini

DATE
1/27/2021



DESCRIPTION		DRAWING NO. 561494-CUCU	REVISION A
SHEET 2 OF 3			



COMMENTS / NOTES

Sheet metal cut-out dimensions.
note use only caphead mounting screws as CSK and round head will interfere with body.

MACPANEL

WWW.MACPANEL.COM

DRAWN BY
bsalvatini

DATE
1/27/2021

DESCRIPTION



DRAWING NO.

561494-CU

REVISION

A

SHEET
3 OF 3