

CONTACT REMOVAL INSTRUCTIONS

MAC PANEL TOOL P/N 412615

Contact Removal:

Remove Module Cap (Figure A) and apply pressure to contact with Extraction Tool. Keeping pressure on Contact, depress plunger and turn Knurled Tip (Figures B, C, D, and E). This will allow removal of the Contact.

Usage:

This tool is to remove the following contacts:

- 0883010-07, 0884010-07 (MINI-CX, DBL SHLD RG316)
- 0883010-08, 0884010-08 (MINI-CX, SPECIAL RG178)
- 0883010-10, 0884010-10 (MINI-CX, RG 178)
- 0883010-11, 0884010-11 (MINI-CX, RG174 & RG316)
- 0883010-12, 0884010-12 (MINI-CX, RG179)
- 0883011-02, 0884011-01 (MINI-PWR, RG316)
- 0883023-01 (CX, W/W POSTS), 0883023-04 (W/W ONE POST)
- 0883028-01, 0884028-01 (MINI-CX, SHORT PCB)
- 0883028-02, 0884028-02 (MINI-CX, LONG PCB)
- 7861100-10, 7861200-10 (MINI-CX, RG178, 50 OHM)
- 7861100-11, 7861200-11 (MINI-CX, RG174 & RG316, 50 OHM)
- 7865200, 7865100 (CX, CRIMP, 3 GHZ)
- 7865200-02, 7865100-02 (CX, SMB, 4 GHZ)
- 7865200-03, 7865100-03 (CX, CRIMP, 2 GHZ)
- 7865200-04, 7865100-04 (CX, CRIMP, 20 GHZ, RG142)
- 7865200-05, 7865100-05 (CX, SMA, 26 GHZ)

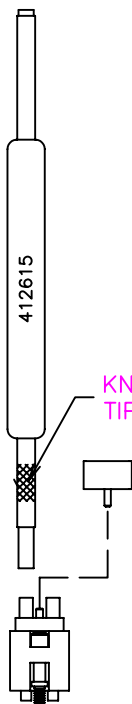
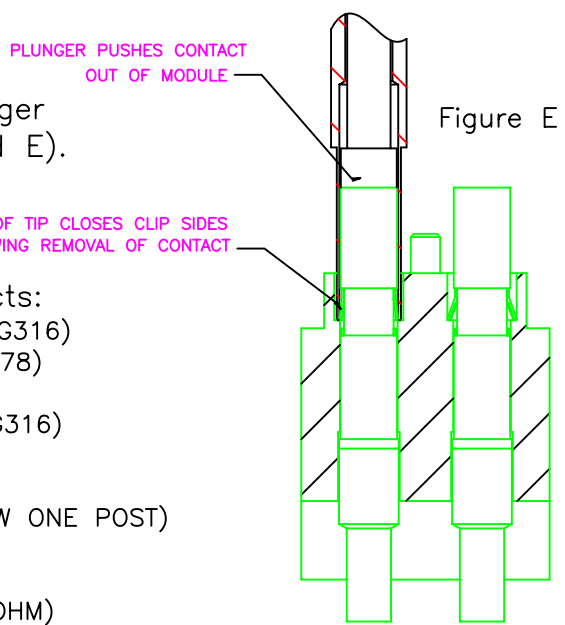


Figure A

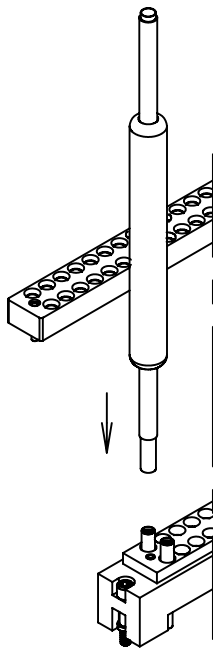


Figure B

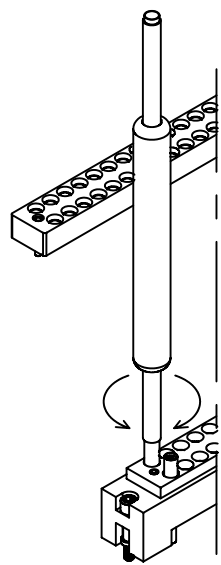


Figure C

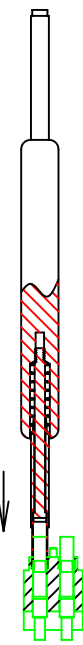


Figure D