

COMMENTS / NOTES

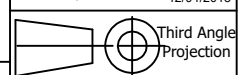
Overall view

MAC-PANEL

WWW.MACPANEL.COM

DRAWN BY
davecooper

DATE
12/04/2013



SHEET
1 OF 2

DESCRIPTION

DAK, PCB ,Ext, 562896, X2-68 Pin
VHDCI Male

DRAWING NO.

561787X1-CU

REVISION

A

J1	J3	TEST POINTS
A50	2	A50
A49	4	A49
A48	6	A48
A47	8	A47
A46	10	A46
A45	12	A45
A44	14	A44
A43	16	A43
A42	18	A42
A41	20	A41
A40	22	A40
A39	24	A39
A38	26	A38
A37	28	A37
A36	30	A36
A35	32	A35
A34	34	A34
A26	SHIELD	
A25	SHIELD	
J1	J2	TEST POINTS
A17	2	A17
A16	4	A16
A15	6	A15
A14	8	A14
A13	10	A13
A12	12	A12
A11	14	A11
A10	16	A10
A9	18	A9
A8	20	A8
A7	22	A7
A6	24	A6
A5	26	A5
A4	28	A4
A3	30	A3
A2	32	A2
A1	34	A1

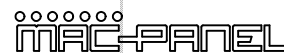
J1	J3	TEST POINTS
B50	1	B50
B49	3	B49
B48	5	B48
B47	7	B47
B46	9	B46
B45	11	B45
B44	13	B44
B43	15	B43
B42	17	B42
B41	19	B41
B40	21	B40
B39	23	B39
B38	25	B38
B37	27	B37
B36	29	B36
B35	31	B35
B34	33	B34
B26	SHIELD	
B25	SHIELD	
J1	J2	TEST POINTS
B17	1	B17
B16	3	B16
B15	5	B15
B14	7	B14
B13	9	B13
B12	11	B12
B11	13	B11
B10	15	B10
B9	17	B9
B8	19	B8
B7	21	B7
B6	23	B6
B5	25	B5
B4	27	B4
B3	29	B3
B2	31	B2
B1	33	B1

J1	J3	TEST POINTS
C50	36	C50
C49	38	C49
C48	40	C48
C47	42	C47
C46	44	C46
C45	46	C45
C44	48	C44
C43	50	C43
C42	52	C42
C41	54	C41
C40	56	C40
C39	58	C39
C38	60	C38
C37	62	C37
C36	64	C36
C35	66	C35
C34	68	C34
C26	SHIELD	
C25	SHIELD	
J1	J2	TEST POINTS
C17	36	C17
C16	38	C16
C15	40	C15
C14	42	C14
C13	44	C13
C12	46	C12
C11	48	C11
C10	50	C10
C9	52	C9
C8	54	C8
C7	56	C7
C6	58	C6
C5	60	C5
C4	62	C4
C3	64	C3
C2	66	C2
C1	68	C1

J1	J3	TEST POINTS
D50	35	D50
D49	37	D49
D48	39	D48
D47	41	D47
D46	43	D46
D45	45	D45
D44	47	D44
D43	49	D43
D42	51	D42
D41	53	D41
D40	55	D40
D39	57	D39
D38	59	D38
D37	61	D37
D36	63	D36
D35	65	D35
D34	67	D34
D26	SHIELD	
D25	SHIELD	
J1	J2	TEST POINTS
D17	35	D17
D16	37	D16
D15	39	D15
D14	41	D14
D13	43	D13
D12	45	D12
D11	47	D11
D10	49	D10
D9	51	D9
D8	53	D8
D7	55	D7
D6	57	D6
D5	59	D5
D4	61	D4
D3	63	D3
D2	65	D2
D1	67	D1

COMMENTS / NOTES

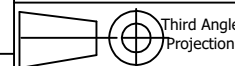
Pin Out List



WWW.MACPANEL.COM

DRAWN BY
davecooper

DATE
12/04/2013



SHEET
2 OF 2

DESCRIPTION

DAK, PCB ,Ext, 562896, X2-68 Pin
VHDCI Male

DRAWING NO.

561787X1-CU-CU

REVISION

A