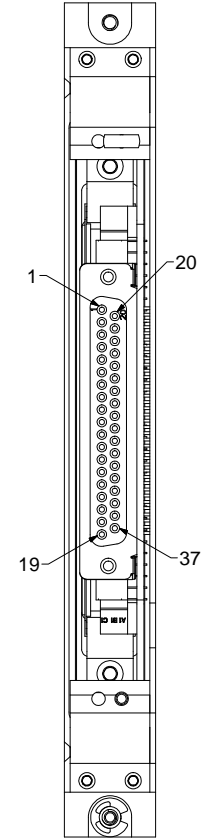
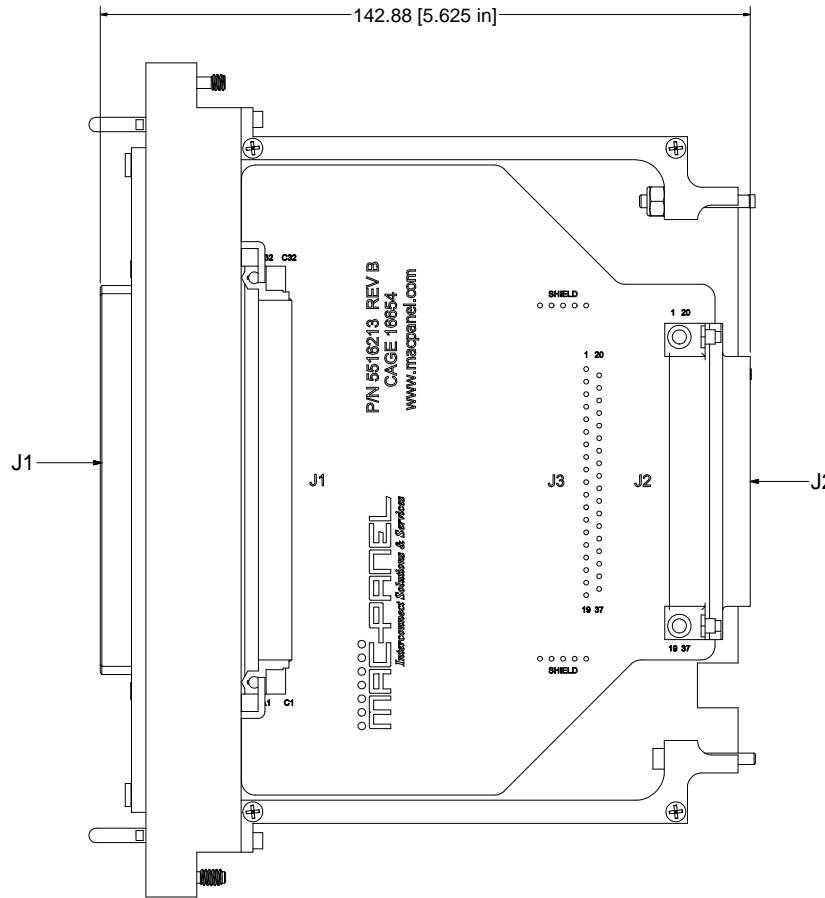
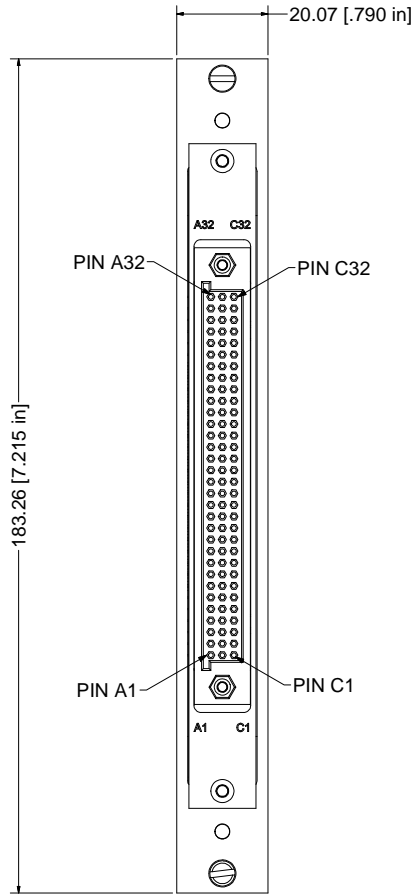


NOTES:

1. USE INSTRUCTION SHEET IN91309 FOR ATTACHING DAK TO PXI CARD.
2. RECEIVER/ITA MODULE TO BE KEYPED ON LEFT SIDE.
3. MATING ITA MODULE P/N 561413
4. SUPPLIED WITH MOUNTING HARDWARE.
5. SEE SHEET 3 FOR WIRE LIST.



RIGHT SIDE PLATE REMOVED FOR CLARITY.

BALLOON LEGEND	
PART NUMBER	QTY

MAC PANEL PROPRIETARY
 This document may contain confidential and proprietary information that is the property of MAC Panel Company that may not be disclosed to, or duplicated for others except as authorized by MAC Panel Company.

TOLERANCES (UNLESS OTHERWISE SPECIFIED)
 UNLESS SPECIFIED: ANGLES ± 1°
 XX ± .03 XX ± .01
 XXX ± .010 XXX ± .005
 XXXX ± .0005

REMOVE ALL BURRS AND BREAK SHARP EDGES.

DRAWN BY
 AO
 ENGINEERING
 GAC
 OPERATIONS
 C. BOGGS
 MANUFACTURING
 R. SPIVEY
 ASSEMBLY

MATERIAL USED

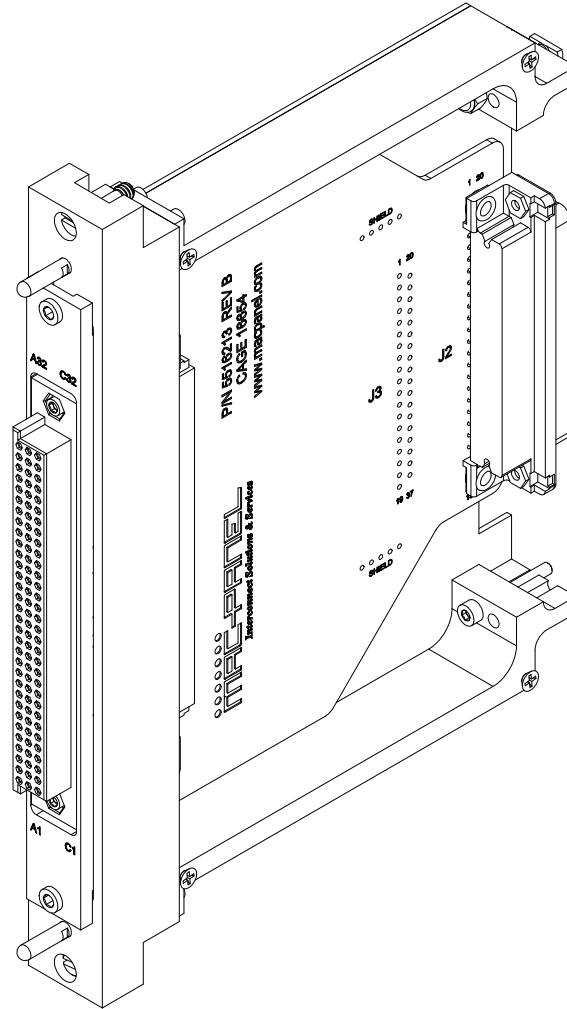
10/21/2011
 MAC PANEL COMPANY - HIGH POINT, NC

TITLE
 DAK, PCB, 96 PIN FML, 37 Pin D-SUB FML

SIZE D DWG NO 561744-cu
 SCALE SPN SHEET 1 OF 3

NOTES:

1. USE INSTRUCTION SHEET IN91309 FOR ATTACHING DAK TO PXI CARD.
2. RECEIVER/ITA MODULE TO BE KEYED ON LEFT SIDE.
3. MATING ITA MODULE P/N 561413
4. SUPPLIED WITH MOUNTING HARDWARE.
5. SEE SHEET 3 FOR WIRE LIST.



BALLOON LEGEND

PART NUMBER
QTY

MAC PANEL PROPRIETARY
 This document may contain confidential and proprietary information that is the property of MAC Panel Company that may not be disclosed to, or duplicated for others except as authorized by MAC Panel Company.

TOLERANCES (UNLESS OTHERWISE SPECIFIED)

ANGLES ± 1°	ANGLES ± .1°
XX ± .03	XX ± .01
XXX ± .010	XXX ± .005
	XXXX ± .0005

REMOVE ALL BURRS AND BREAK SHARP EDGES.

DRAWN BY AO	10/21/2011
ENGINEERING GAC	
OPERATIONS C. BOGGS	
MANUFACTURING R. SPIVEY	
ASSEMBLY	
MATERIAL USED	

MAC PANEL COMPANY - HIGH POINT, NC	
TITLE	
DAK, PCB, 96 PIN FML, 37 Pin D-SUB FML	
SIZE D	DWG NO 561744-cu
SCALE	REV
SPN:	SHEET 2 OF 3

NOTES:

1. USE INSTRUCTION SHEET IN91309 FOR ATTACHING DAK TO PXI CARD.
2. RECEIVER/ITA MODULE TO BE KEYED ON LEFT SIDE.
3. MATING ITA MODULE P/N 561413
4. SUPPLIED WITH MOUNTING HARDWARE.
5. SEE SHEET 3 FOR WIRE LIST.

561744wl		
J1	J2/J3	SIGNAL (PICKERING 40-297-001)
A32	1	CH1 OUT
A31	2	CH2 OUT
A30	3	CH3 OUT
A29	4	CH4 OUT
A28	5	CH5 OUT
A27	6	CH6 OUT
A26	7	CH7 OUT
A25	8	CH8 OUT
A24	9	CH9 OUT
A23	10	CH10 OUT
A22	11	CH11 OUT
A21	12	CH12 OUT
A20	13	CH13 OUT
A19	14	CH14 OUT
A18	15	CH15 OUT
A17	16	CH16 OUT
A16	17	CH17 OUT
A15	18	CH18 OUT
A14	19	FP_GND
B32	20	CH1 IN
B31	21	CH2 IN
B30	22	CH3 IN
B29	23	CH4 IN
B28	24	CH5 IN
B27	25	CH6 IN
B26	26	CH7 IN
B25	27	CH8 IN
B24	28	CH9 IN
B23	29	CH10 IN
B22	30	CH11 IN
B21	31	CH12 IN
B20	32	CH13 IN
B19	33	CH14 IN
B18	34	CH15 IN
B17	35	CH16 IN
B16	36	CH17 IN
B15	37	CH18 IN

BALLOON LEGEND

PART NUMBER
QTY

MAC PANEL PROPRIETARY
 This document may contain confidential and proprietary information that is the property of MAC Panel Company that may not be disclosed to, or duplicated for others except as authorized by MAC Panel Company.

TOLERANCES (UNLESS OTHERWISE SPECIFIED):
 ANGLES ± 1° MANUFACTURING: ANGLES ± 1°
 XX ± .03 XX ± .01
 XXX ± .010 XXX ± .005
 XXXX ± .0005

REMOVE ALL BURRS AND BREAK SHARP EDGES.



DRAWN BY AO	10/21/2011	MAC PANEL COMPANY - HIGH POINT, NC
ENGINEERING GAC		TITLE
OPERATIONS C. BOGGS		DAK, PCB, 96 PIN FML, 37 Pin D-SUB FML
MANUFACTURING R. SPIVEY		SIZE D
ASSEMBLY		DWG NO 561744-cu
MATERIAL USED		REV
		SCALE
		SPR
		SHEET 3 OF 3