

CONTACT REMOVAL INSTRUCTIONS

MAC PANEL TOOL P/N 412604

Contact Removal :
 Remove Module Cap (Figures A and B) and apply pressure to contact with Extraction Tool. While keeping pressure on Contact, depress plunger Figures C, D, and E). This will allow removal of the Contact.

Usage

This tool is to remove the following contacts:

- 0883012-02, 0884012R-01 (SIGNAL, 20-24 AWG)
- 0883013-02, 0884013R-01 (SIGNAL, 14 AWG)
- 0883022-01, 0884022R-01 (SIGNAL, W/W POST, W/RT ANGLE)
- 0883027-01, 0884027R-01 (SIGNAL, SHORT PCB, W/RT ANGLE)
- 0883027-02, 0884027R-02 (SIGNAL, MED. PCB, W/RT ANGLE)
- 0883027-03, 0884027R-03 (SIGNAL, LONG PCB)
- 0883027-04, 0884027R-04 (SIGNAL, SHORT PCB)
- 0883027-05, 0884027R-05 (SIGNAL, MED. PCB)
- 0883027-06, 0884027R-06 (SIGNAL, LONG PCB)
- 70206403, 70206405 (SPRING PROBES W/W POST)

PLUNGER PUSHES CONTACT OUT OF MODULE

Figure E

INSIDE OF TIP CLOSSES CLIP SIDES ALLOWING REMOVAL OF CONTACT

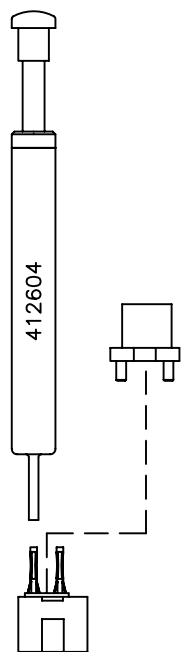
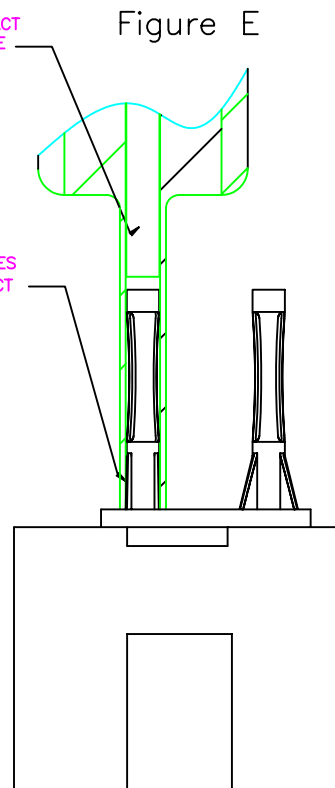


Figure A

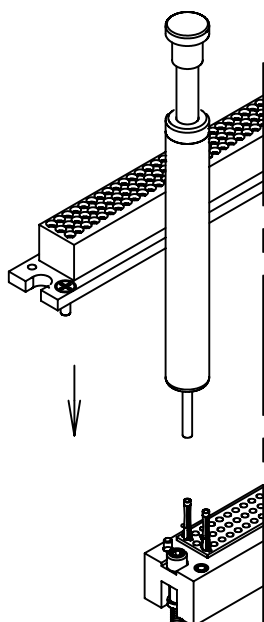


Figure B

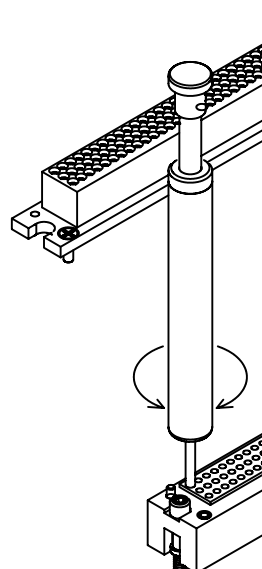


Figure C

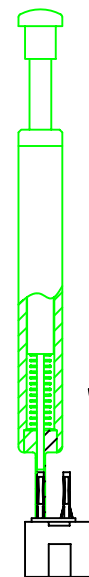


Figure D